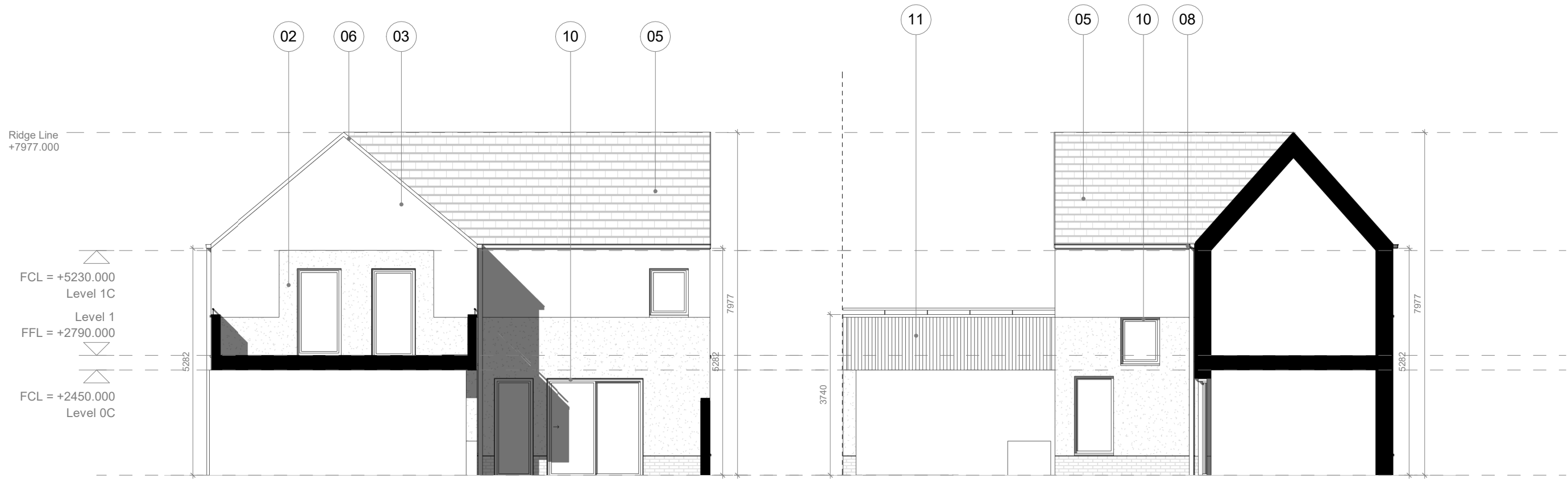


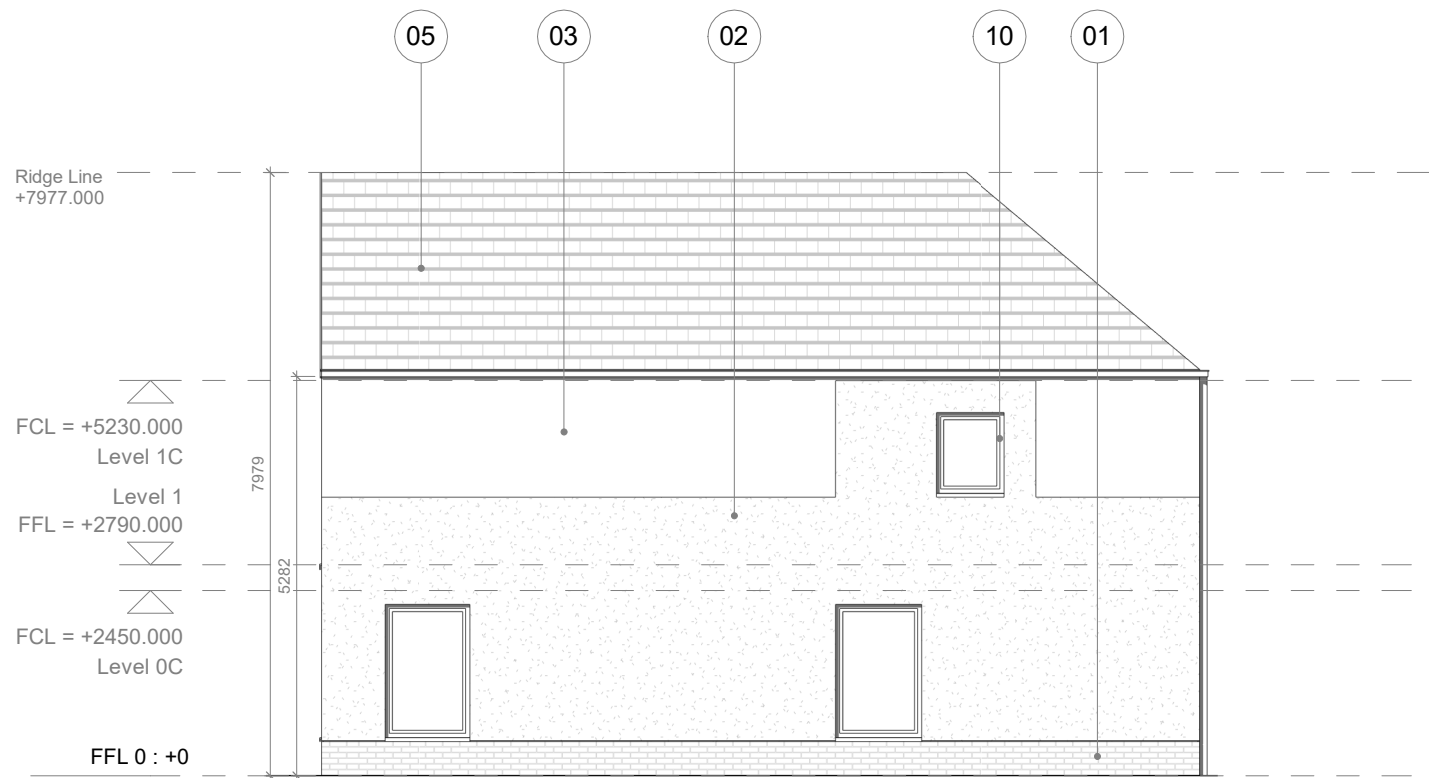
Courtyard House 3b5p\_Front Elevation\_V1b

Courtyard House 3b5p\_External Rear Elevation\_V1b



Courtyard House 3b5p\_Internal Side Elevation - Parking\_V1b

Courtyard House 3b5p\_Internal Rear Elevation\_V1b



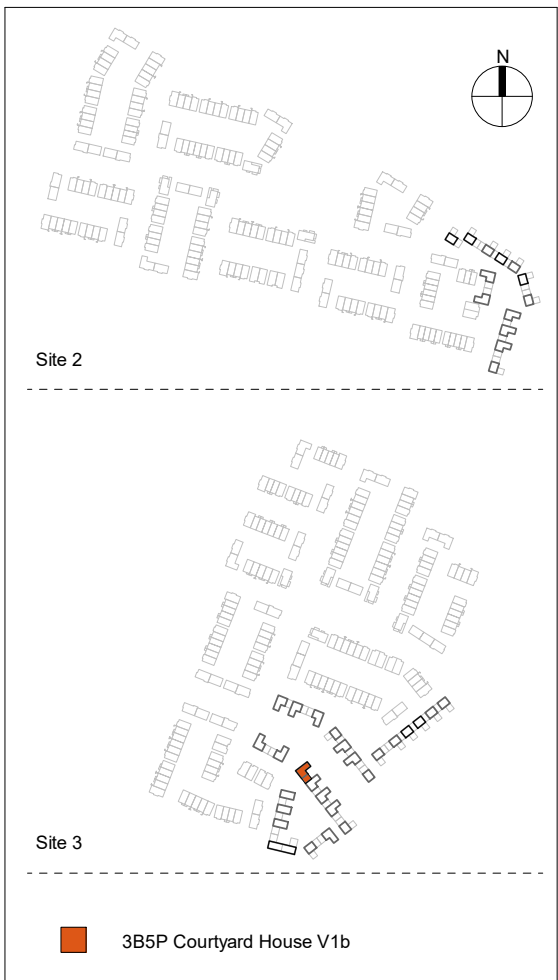
Courtyard House 3b5p\_Side Elevation\_V1b

- general notes
1. This drawing is copyright Proctor and Matthews Architects and must not be copied in whole or part without prior consent.
  2. Do not scale from this drawing.
  3. Refer to drawing number.
  4. This drawing is to be read in conjunction with all other relevant architects and engineer's drawings.
  5. All dimensions to be checked on site prior to commencement of works and any discrepancies are to be checked with the architect immediately.
  6. Unless otherwise stated all dimensions are in mm.

Obs. 1: Garden wall heights are dependant on location within masterplan.  
Obs. 2: Elements of side elevations become party walls dependant on location within masterplan.  
Obs. 3: When terraces are back to back, refer to masterplan for pergola details.  
Obs. 4: Please refer to masterplan layout for individual pergolas and locations.

#### Material Key

| Key | Material   |
|-----|--|
| 01  | Stretcher bond brickwork - charcoal  |
| 02  | Rough textured render - white  |
| 03  | Smooth textured render - white   |
| 04  | Recessed entrance porches with white pre-cast concrete lining - white                              |
| 05  | Artificial slate or concrete equivalent roof tiles - blue/grey                                     |
| 06  | Verge detail - blue/grey   |
| 07  | Vertical louvered timber screens/posts to terrace  |
| 08  | Square section powder coated rainwater goods - black   |
| 09  | Vertical louvered timber screens/doors to carports   |
| 10  | Composite/PVC windows and doors  |
| 11  | Profiled fibre cement facade material and handrail - hessian                                       |
| 12  | Profiled fibre cement facade material privacy screens with powder coated metal 'T' frame - hessian |
| 13  | Grey/white brick with grey mortar  |
| 14  | Smooth textured render - dark grey   |
| 15  | Grey/white brick with colour match mortar  |
| 16  | Projecting header course grey/white brick grey mortar  |



| P02 | 08.12.21 | For Planning | LG |
|-----|----------|--------------|----|
| P01 | 26.10.21 | For Planning | LG |
| /   | 19.03.21 | For Planning | HS |
| rev | date     | description  | dw |

client Glenveagh

project A496 Lands at Hollystown-Kilmartin

status S4 - Suitable for stage approval

drawing title 3 Bed 5 Person 2 Storey Courtyard House V1b - Elevations

drawing no A496-PMA-XX-XX-DR-A-2006

| project no - originator - volume - level - type - role - number | scale        | date       | drawn | checked |
|---|--------------|------------|-------|---------|
| 1:100   | 03/01/21     | MCG        |       |         |
| original A2   | revision P02 | checked CM |       |         |

Proctor & Matthews Architects

address 7 Blue Lion Place, 237 Long Lane, London SE1 4PU  
telephone +44 (0)20 7378 6695  
fax +44 (0)20 7378 1372  
email info@proctorandmatthews.com  
website www.proctorandmatthews.com